

Single Phase One-Stage Filters DATASHEET

Features

- . This CLYC series is general purpose single phase one-stage filter.
- . The rated current can be offered up to 20 amps.
- . Various output selections such as fast-on terminal, M4 screw terminals and lead wire.
- . Low leakage current version upon requested.
- . Approved by UL, CSA, VDE and CE
- . Custom-specific versions are available on request
- . Application for Electrical and electronic equipment, Household equipment, Automation equipment, Fitness machine, Medical equipment

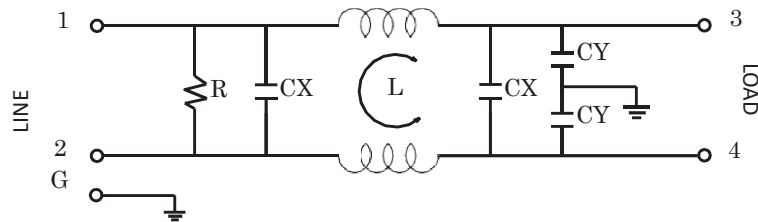


Model: CLYC10T1

Technical Specification

Rated voltage	125/250VAC
Rated currents	Up to 20A
Operating frequency	50/60Hz
Hipot rating(Line-to-line)	1450VDC
Hipot rating(Line-to-ground)	2250VDC
Operating temperature	-25~+85°C
Safety compliance	CLYC series (UL,CSA,CE))

Typical electrical schematic

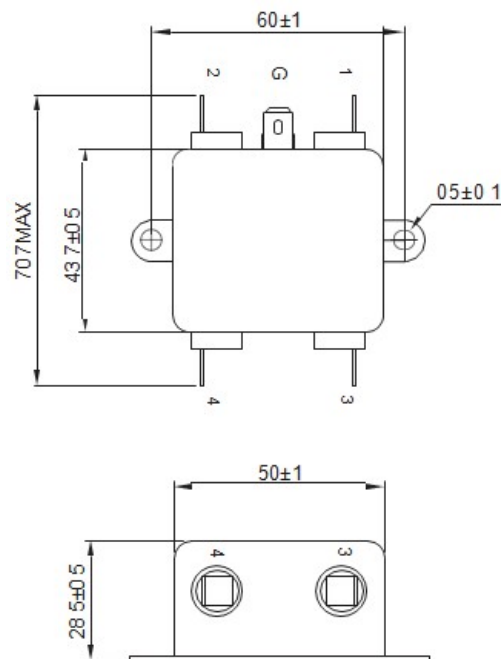


Filter Selection Table

Part No.	Rated Current (A)	Inductance L(mH)	Capacitance CX(μ F)	Capacitance CY(pF)	Resistance R(ohm)	Output connections
CLYC05T1	5					Fast-on terminal
CLYC10T1	10					
CLYC15T1	15					
CLYC20T1	20					
CLYD05T4	5					M4 Screw terminals
CLYD10T4	10					
CLYD15T4	15					
CLYD20T4	20					

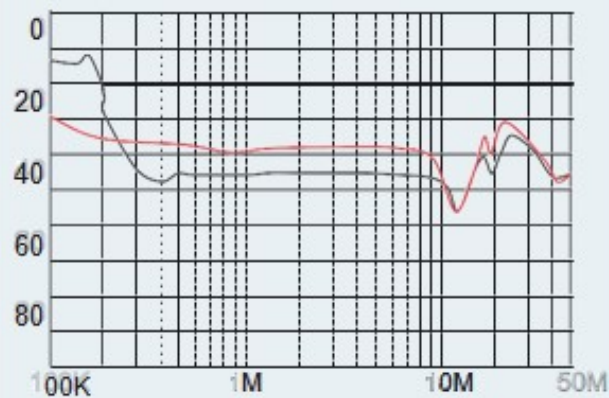
Single Phase One-Stage Filters DATASHEET

Physical Dimensions: (mm)

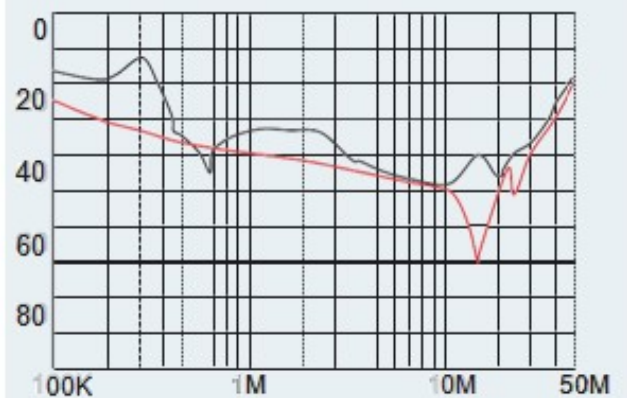


Typical filter attenuation (Common mode - Normal mode -)

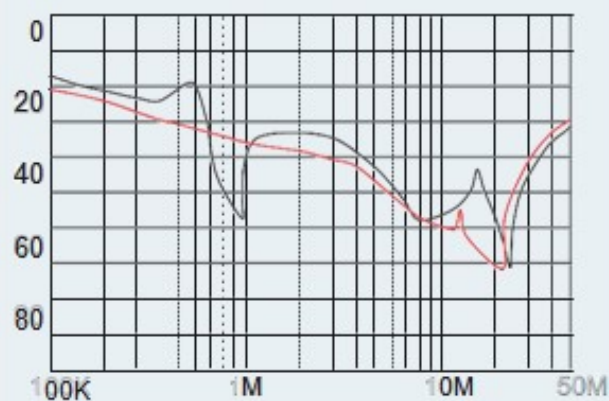
CLYC-05



CLYC-10



CLYC-15



CLYC-20

